



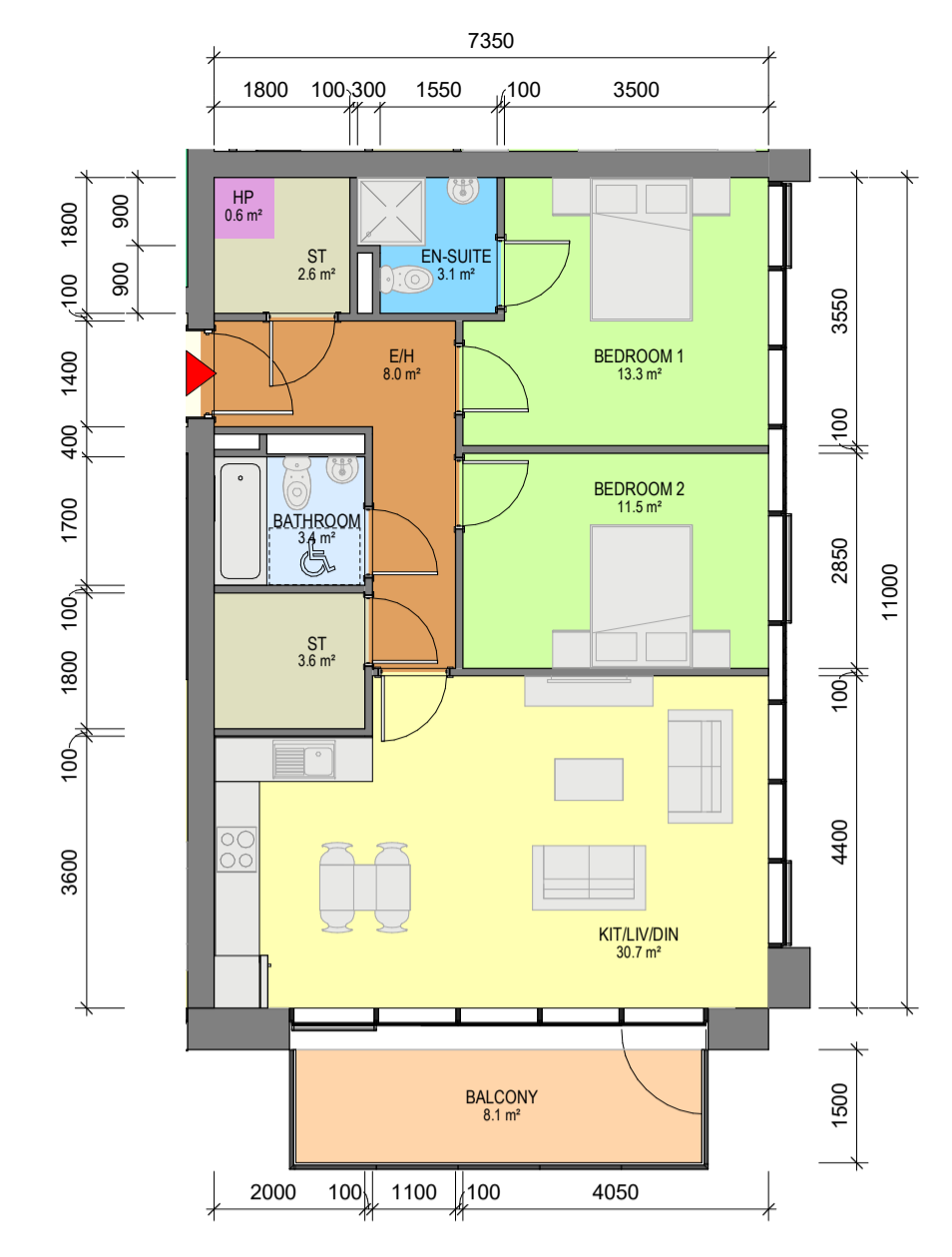
**1 Apartment Type 2M**  
1 : 100

- 2 BED, 3 PERSON APARTMENT
- NET INTERNAL AREA (NIA) Areas shown in plan
- GROSS INTERNAL AREA (GIA) : 64.28sqm



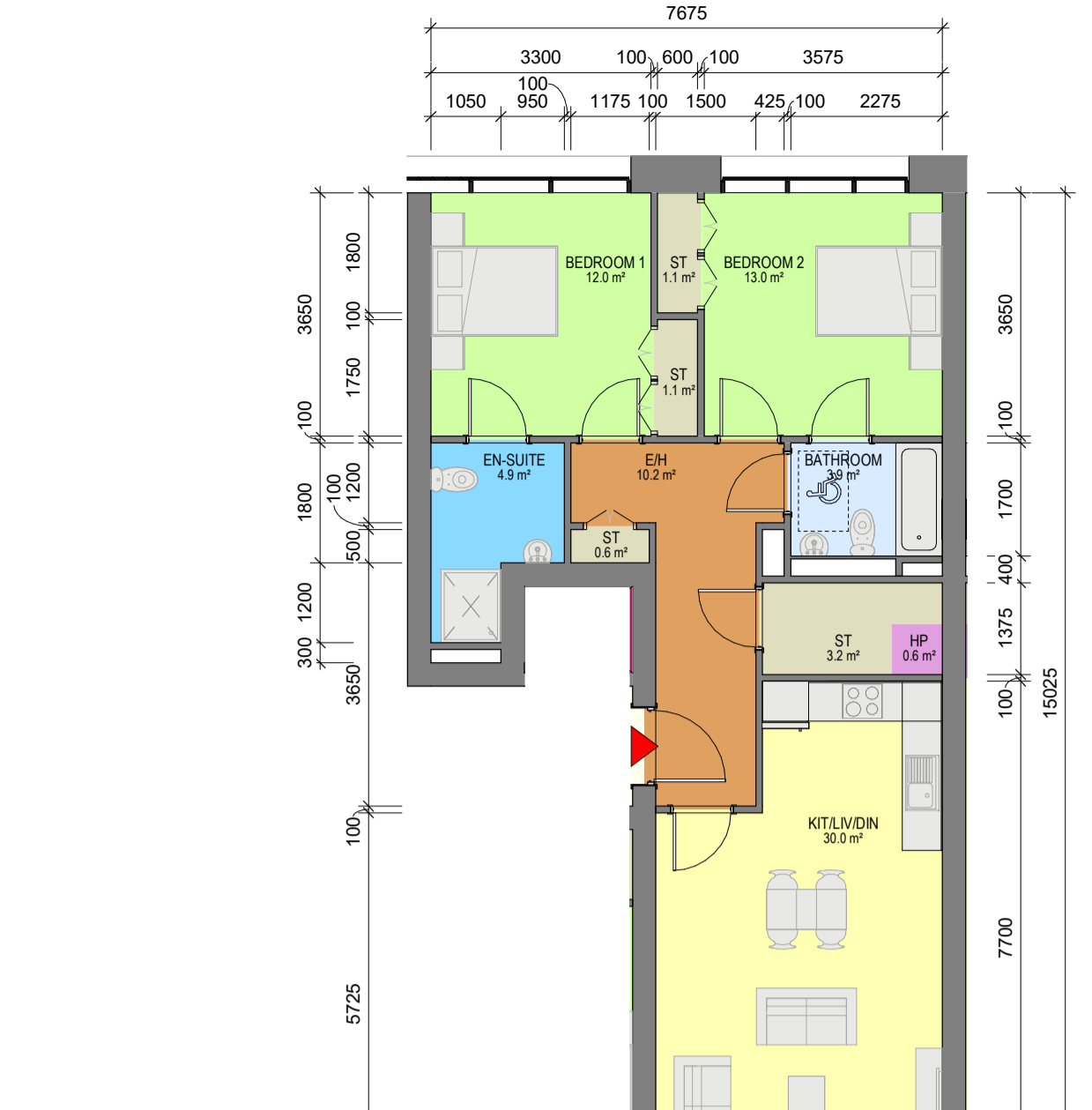
**2 Apartment Type 2N**  
1 : 100

- 2 BED, 3 PERSON APARTMENT
- NET INTERNAL AREA (NIA) Areas shown in plan
- GROSS INTERNAL AREA (GIA) : 63.25sqm



**3 Apartment Type 2O**  
1 : 100

- 2 BED, 4 PERSON APARTMENT
- NET INTERNAL AREA (NIA) Areas shown in plan
- GROSS INTERNAL AREA (GIA) : 80.85sqm



**4 Apartment Type 2P**  
1 : 100

- 2 BED, 4 PERSON APARTMENT
- NET INTERNAL AREA (NIA) Areas shown in plan
- GROSS INTERNAL AREA (GIA) : 84.91sqm



**5 Apartment Type 2Q**  
1 : 100

- 2 BED, 4 PERSON APARTMENT
- NET INTERNAL AREA (NIA) Areas shown in plan
- GROSS INTERNAL AREA (GIA) : 73.90sqm



**6 Apartment Type 2R**  
1 : 100

- 2 BED, 4 PERSON APARTMENT
- NET INTERNAL AREA (NIA) Areas shown in plan
- GROSS INTERNAL AREA (GIA) : 83.75sqm



**7 Apartment Type 2S**  
1 : 100

- 2 BED, 4 PERSON APARTMENT
- NET INTERNAL AREA (NIA) Areas shown in plan
- GROSS INTERNAL AREA (GIA) : 73.50sqm



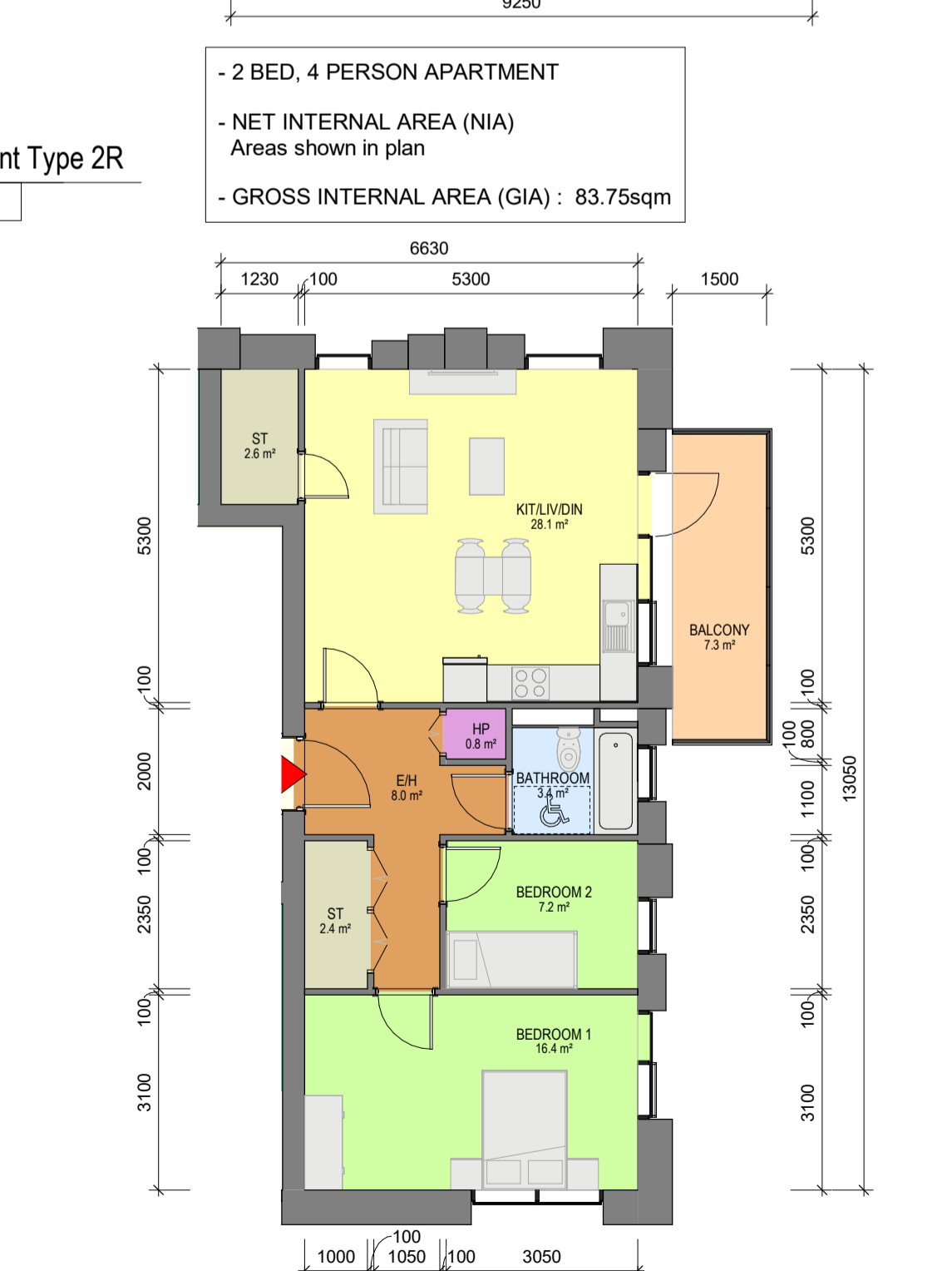
**8 Apartment Type 2T**  
1 : 100

- 2 BED, 4 PERSON APARTMENT
- NET INTERNAL AREA (NIA) Areas shown in plan
- GROSS INTERNAL AREA (GIA) : 73.46sqm



**9 Apartment Type 2U**  
1 : 100

- 2 BED, 4 PERSON APARTMENT
- NET INTERNAL AREA (NIA) Areas shown in plan
- GROSS INTERNAL AREA (GIA) : 87.94sqm



**10 Apartment Type 2V**  
1 : 100

- 2 BED, 3 PERSON APARTMENT
- NET INTERNAL AREA (NIA) Areas shown in plan
- GROSS INTERNAL AREA (GIA) : 72.02sqm



**11 Apartment Type 2W**  
1 : 100

- 2 BED, 4 PERSON APARTMENT
- NET INTERNAL AREA (NIA) Areas shown in plan
- GROSS INTERNAL AREA (GIA) : 74.87sqm



**12 Apartment Type 2X**  
1 : 100

- 2 BED, 4 PERSON APARTMENT
- NET INTERNAL AREA (NIA) Areas shown in plan
- GROSS INTERNAL AREA (GIA) : 73.50sqm

THE COPYRIGHT OF THIS DRAWING IS VESTED WITH CW O'BRIEN ARCHITECTS LIMITED AND MUST NOT BE COPIED OR REPRODUCED WITHOUT THE CONSENT OF THE COMPANY.

FIGURED DIMENSIONS ONLY TO BE TAKEN FROM THIS DRAWING. DO NOT SCALE.

ALL CONTRACTORS MUST VISIT THE SITE AND BE RESPONSIBLE FOR CHECKING ALL SETTING OUT DIMENSIONS AND NOTIFYING THE ARCHITECT OF ANY DISCREPANCIES PRIOR TO ANY MANUFACTURE OR CONSTRUCTION WORK.

NOTES:

FOR EXACT BALCONY SIZES, PLEASE REFER TO THE HOUSING QUALITY ASSESSMENT

APARTMENT ROOM LEGEND	
[Green Box]	BEDROOM
[Yellow Box]	KITCHEN / DINING / LIVING
[Blue Box]	BATHROOM
[Light Blue Box]	ENSUITE
[Grey Box]	STORE
[Orange Box]	ENTRANCE / HALL
[Light Orange Box]	BALCONY / TERRACE / WINTER GARDEN
[Purple Box]	HP

SYMBOL LEGEND	
[Red Triangle]	APARTMENT ENTRANCE
[Blue Square]	1200mm x 750mm TURNING SPACE

Rev	Date	Description	Issued By
P04	28/03/2022	ISSUED FOR PLANNING	EB
P03	25/03/2022	ISSUED FOR PLANNING	EB
P02	08/10/2021	ISSUED FOR PRE-PLANNING	EB
P01	27/09/2021	ISSUED FOR REVIEW	EB

Project Stage

# PLANNING

Client:  
Tiznow Property Company Limited  
(Comer Group Ireland)

Project:  
City Park Development  
at the Former Tedcastles Site,  
Centre Park Road, Cork

Drawing Title:  
APARTMENT TYPES - SHEET 5 OF 11

Drawn	Checked	Paper Size	Scale	Date
VF	EB	A1	1 : 100 @A1	07/11/21

Project No.	Drawing No.	Classification	Revision
PE21055	5010		P04

File Name:  
PE21055-CWO-ZZ-DR-A-5010

Status:  
**A1 - Authorized and accepted for planning stage**



No.1 Sarsfield Quay, Dublin 7, D07 R9FH  
t: 01 518 0170 e: admin@cwoarchitects.ie  
Dublin | Cork | Galway | London | UK & Europe +  
www.cwoarchitects.ie

Please consider the environment before printing this sheet